

PORTABLE SCENTING SYSTEM

AROMA DIFFUSER

PRODUCT MANUAL



SAFETY

To ensure safe usage, read through the precautions below:

- The diffuser should always be used in an upright position. Do not tilt the diffuser as oil can spill inside the device and damage the mechanics.
- Use of the diffuser and aroma oils requires adult supervision.
- Do not wet the device or place it near any liquids, sinks, bath tubs, or outdoors.
- Do not use the device with any power cord other than the one provided with your diffuser. Position the power cord to prevent it from being a tripping hazard.
- Before connecting your diffuser to a power outlet, check that the voltage label specified on the adapter is the same as the power supply.
- Do not run the unit on empty.
- Do not use oils that have large particles or are too viscous, i.e. sandal wood, cedar wood, rose and ho wood, frankincense, myrrh, agar wood, etc.
- Do not apply oils to skin unless instructed by a health care professional. Keep oils out of contact with eyes. If contact occurs, flush with water immediately.
- Do not dilute the aroma oils with water.

BASIC PARAMETERS

1

Model

Dimensions

285*64mm

Upply Voltage

DC12V

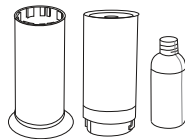
Total Power

3W

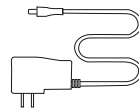
Coverage Area

200m³

EQUIPMENT CHECK



Aroma diffuser



Power Adaptor



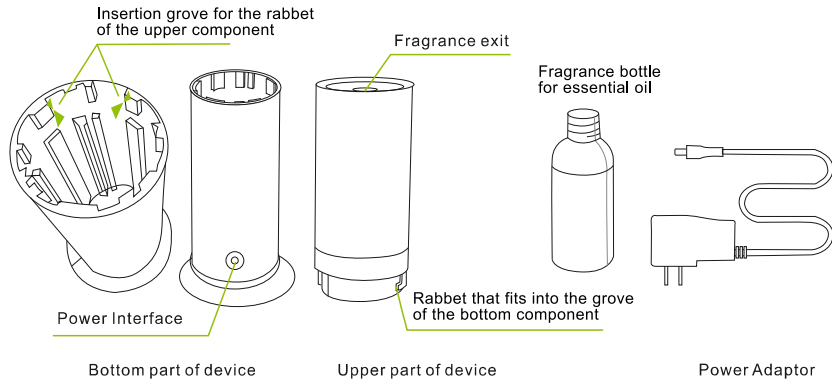
Written materials

Please check to make sure that **all** the parts are present in the package. Upon opening the package, locate the device, a fragrance bottle, adaptor, remote control, as well as a manual. If any of those are missing, please contact us immediately.

SETTING UP YOUR DIFFUSER

2

1. Open the box and take out all the parts



SETTING UP YOUR DIFFUSER

3

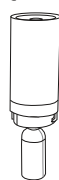
Figure 1

1. The fragrance bottle is to be screwed onto the upper component of the device.



Figure 2

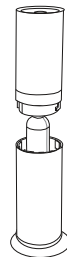
2. Remove the cap from the fragrance bottle and add an inch of your favorite pure essential oil. Screw the bottle onto the upper component of the device. Turn the bottle counter clockwise. NOTE: Keep the bottle vertical to prevent any spillage.



Fixed fragrance bottle

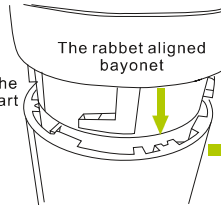
3. Take the upper component-fragrance bottle assembly and insert it into the bottom component of the device. Turn the top component clockwise to align the rabbet with the groove located inside the bottom component. Turn until tight.

Figure 3



Put into the bottom part of device

Figure 4



The rabbet aligned bayonet



After press down then Clockwise rotate the upper part snaps into bottom.

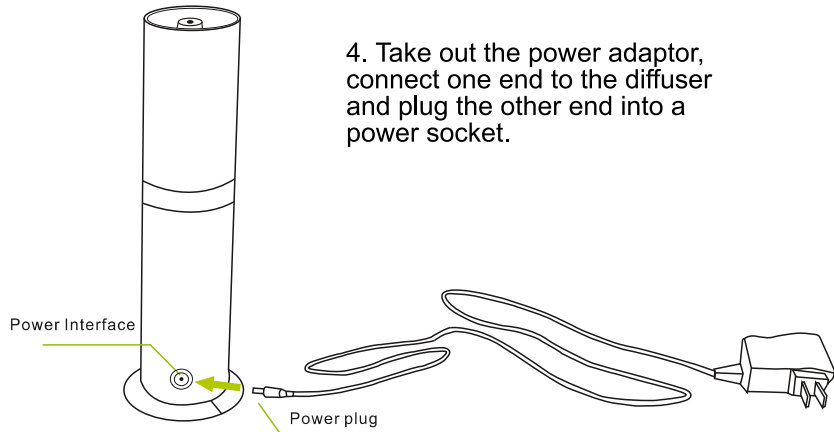
Figure 5



SETTING UP YOUR DIFFUSER

4

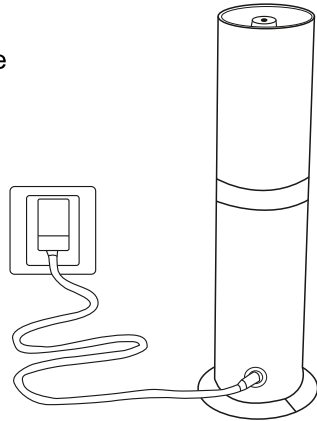
4. Take out the power adaptor, connect one end to the diffuser and plug the other end into a power socket.



SETTING UP YOUR DIFFUSER

5

5. When the power is on, the light will turn blue.



HOW TO USE

6

1 Add Pure Essential Oil:

Hold the upper and lower components of the device in each hand and turn to separate the two. Next, unscrew the fragrance bottle from the upper component. Add at least an inch of pure essential oil into the bottle, and then screw it back onto the upper component. Make sure that the bottle is tightened before assembling the upper and lower components back together.

NOTE: Use only 100% pure essential oils without carrier, vegetable or synthetic oil addition.

2 Connect the Power Supply:

Take out the power adaptor, connect one end to the diffuser and plug the other end into a power socket.

3 Set Your Preference Using the Remote Control:

There are different settings for you to choose how you want the diffuser to give off the aroma, saving much of your oil and money down the road. Refer to the next page for specific instructions.

The LED light gives off 3 colors:

Blue: Indicates the device is powered on

Green: Indicates the scent is being diffused

Red: Flashes when any button on the remote control is being pressed

REMOTE CONTROL SETTING

7



Press to turn on or off the device.



(AROMA): This resets the device to its default setting: Maximum spray volume, working 24 hrs without any break.



(DENSITY+): Press once to increase aroma's density by 10%. Press 10 times to reach maximum density.



(DENSITY-): Press once to decrease aroma's density by 10%. Press 10 times to reach minimum volume to save on oil.



(30/30 s): Press this button to have the diffuser work for 30 seconds, and then break for 30 seconds.

REMOTE CONTROL SETTING

8

30/60s

(30/60 s): Press this button to have the diffuser work for 30 seconds, and then break for 60 seconds.

30/120s

(30/120 s): Press this button to have the diffuser work for 30 seconds, and then break for 120 seconds.

4. Cold air diffuser working time

1h

(1h): When the power is on, press this button to set the time the diffuser will be on for. In this case, the diffuser will be working for one hour then will turn off automatically.

4h

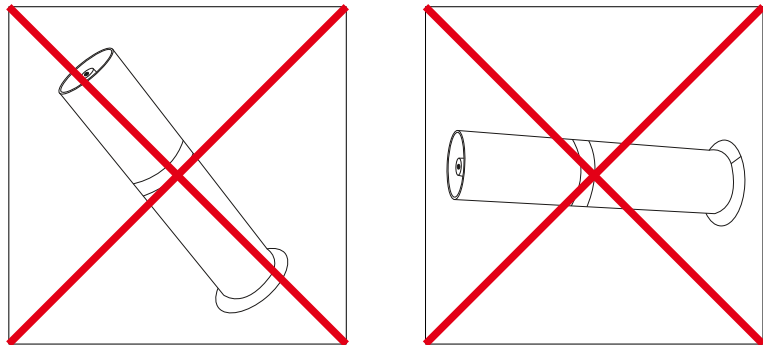
(4h): When the power is on, press this button to set the time the diffuser will be on for. In this case, the diffuser will be working for 4 hours then will turn off automatically.

8h

(8h): When the power is on, press this button to set the time the diffuser will be on for. In this case, the diffuser will be working for 8 hours then will turn off automatically.

NOTE

9



After the device is properly setup with essential oil already added into the fragrance bottle, keep the device standing vertically. Do not tilt or lay it down to avoid unnecessary oil spillage. Any spillage will contaminate the circuit and may damage the device.

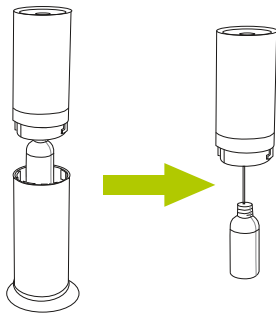
MAINTENANCE

10

For optimal performance, clean the diffuser with alcohol after 50 hours of use, each time you've diffused thicker oils, or when you want to change the scent of your essential oil.

NOTE: Clean the diffuser only with alcohol (no water or soap).

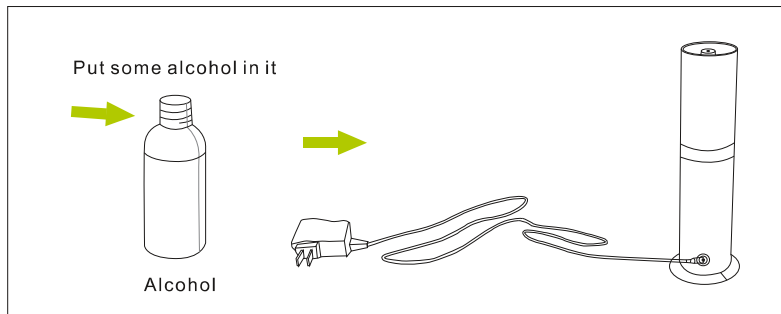
1. Separate the top and bottom components and unscrew the fragrance bottle carefully.



MAINTENANCE

11

2. Fill the empty fragrance bottle with rubbing alcohol to the second line from the bottom.
3. Screw the alcohol filled bottle into the diffuser.
4. Run the diffuser for 5-10 minutes to ensure the alcohol can filter through the whole device.
5. After cleaning, turn off the diffuser and add your choice of essential oil into the fragrance bottle.



COMMON FAULTS

12

FAULTS	POSSIBLE EXPLANATIONS
No oil is diffused	Make sure the power is on. Pump may be damaged.
Smoke	If atomizing head is blocked, clean the device as instructed. Pump may be ageing.
Diffuser spraying out droplets of liquid	Device is tilted or the spray head may be damaged.
Spillage	Fragrance bottle is loose.
Noise	Pump is loose.

AFTER-SALES SERVICE

13

The manufacturer offers a one-year warranty. During this period, the repair of the diffuser is free.